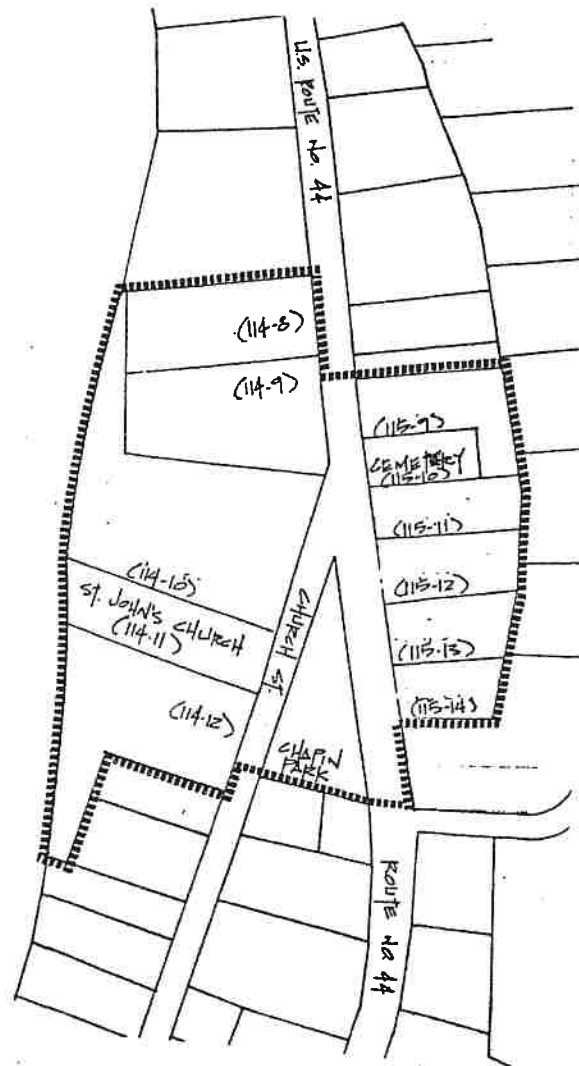


Boundary of the
New Hartford Historic District



114-8 Tourville/Marino	115-9 McPhee/Kowalczyk
114-9 Reilly	115-10 Cemetery
114-10 Colbert/Ecklund	115-11 Rossman
114-11 St. John's	115-12 Bermingham/ Romaniello
114-12 Gunning	115-13 Murray
	115-14 Pellum

The rules governing historic districts are spelled out in detail in the General Statutes of Connecticut (Chapter 97a) and in the Rules and Procedures formulated by the New Hartford District Commission, May 1989. The following guidelines have been developed to give the property owner a brief overview of the formal rules. We hope this brochure will be of help when you are planning renovations.

Changes to the exterior of your property must be approved by the New Hartford Historic District Commission. Applications for a certificate of appropriateness can be obtained from the receptionist at Town Hall or the Commission Clerk. The Commission meets the third Wednesday of the month. Please submit applications two weeks in advance of a meeting as a public hearing must be held in order for any decision to be made, and public hearings must be advertised. If you feel that you may have a problem getting a certificate of appropriateness, contact the Commission prior to submitting your plan. The Commission was formed not only to protect the interests of the residents of the District, but also to assist them in matters of this sort.