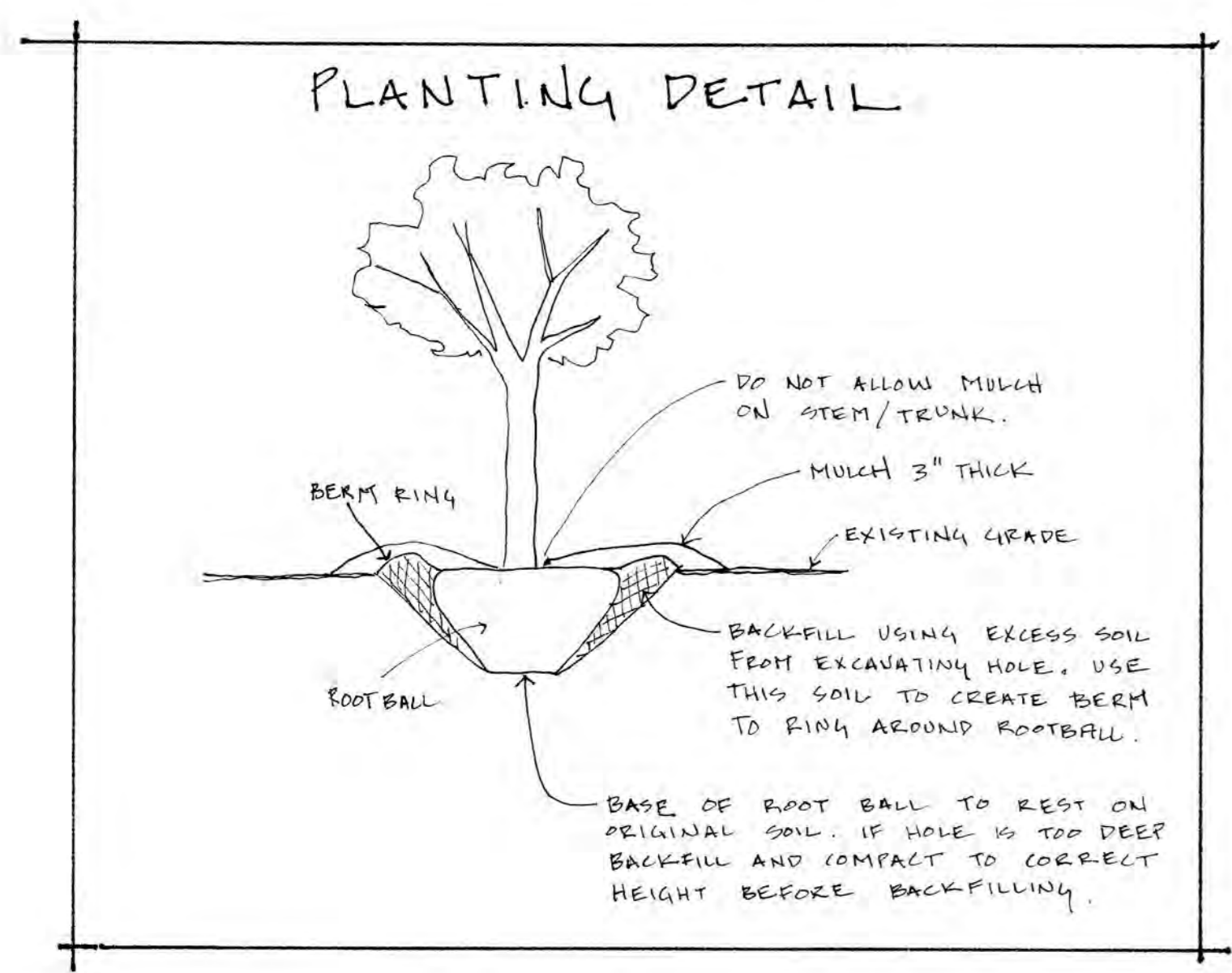


Notes: Prior to planting mow existing vegetation in proposed planting area

Direct plant into existing vegetation
Mulch with shredded bark mulch
3" deep around shrubs and 2" deep around perennials if possible.

Water in plants after installation.

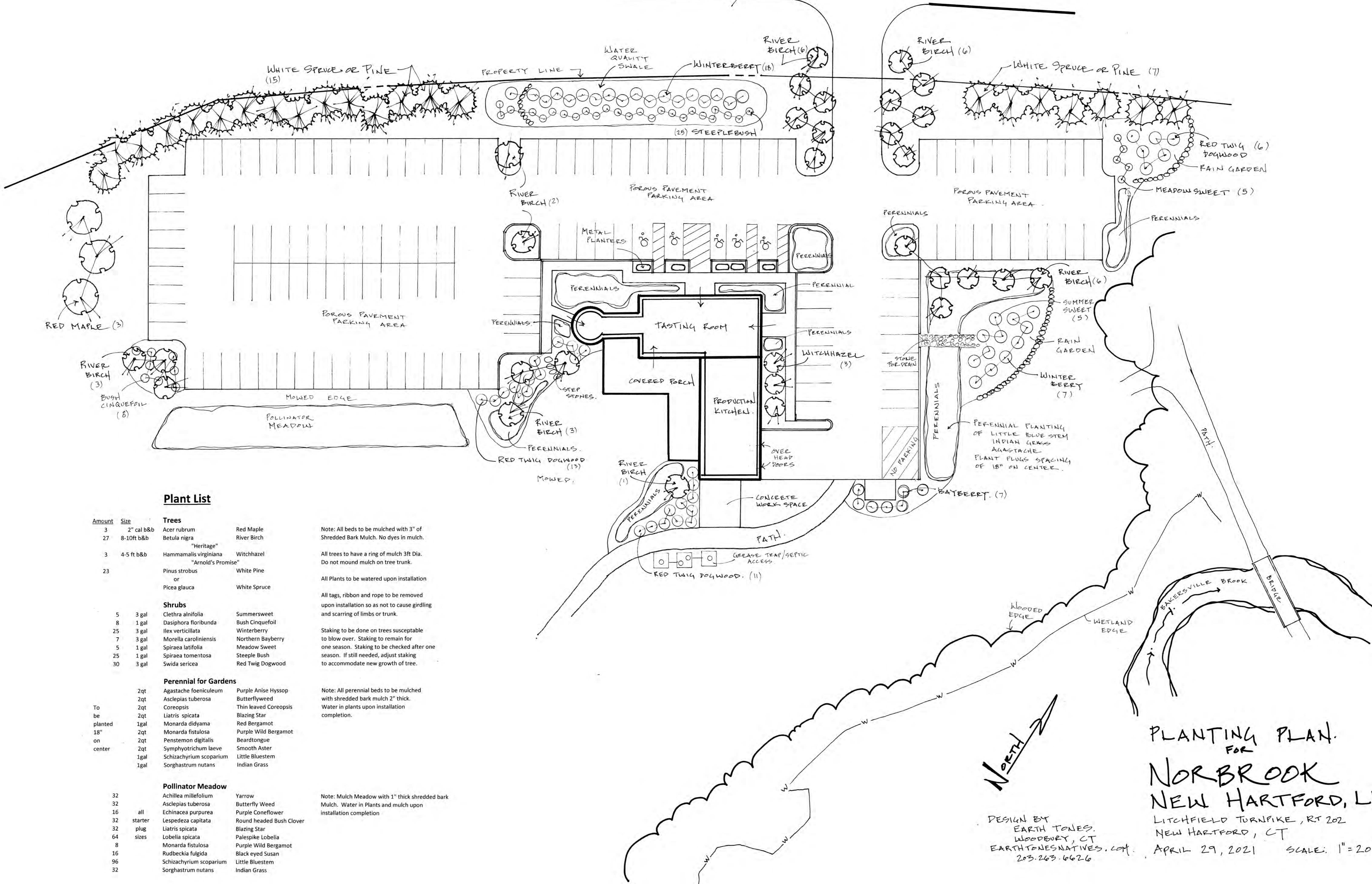
Some perennials have been strategically placed and are noted on plan. Follow location chart for correct placement of all others.



PLANTING PLAN
POND ENHANCEMENT
FOR
NORBROOK
NEW HARTFORD, LLC
LITCHFIELD TURNPIKE, RT 202
NEW HARTFORD, CT
APRIL 29, 2021 SCALE 1" = 10'

DESIGN BY
EARTH TONES
WOODBURY, CT
EARTHTONESNATIVES.COM
203.263.6626

LITCHFIELD TURNPIKE / RTE 202



Plant List

Amount	Size	Trees
3	2" cal b&b	Acer rubrum Red Maple
27	8-10ft b&b	Betula nigra River Birch
		"Heritage"
3	4-5 ft b&b	Hammamalis virginiana Witchhazel
		"Arnold's Promise"
23		Pinus strobus White Pine
		or Picea glauca White Spruce
Shrubs		
5	3 gal	Clethra alnifolia Summersweet
8	1 gal	Dasiphora floribunda Bush Cinquefoil
25	3 gal	Ilex verticillata Winterberry
7	3 gal	Morella carolinensis Northern Bayberry
5	1 gal	Spiraea latifolia Meadow Sweet
25	1 gal	Spiraea tomentosa Steeple Bush
30	3 gal	Swida sericea Red Twig Dogwood

To be planted 18" on center	Perennial for Gardens
2qt	Agastache foeniculum Purple Anise Hyssop
2qt	Asclepias tuberosa Butterflyweed
2qt	Coreopsis Thin leaved Coreopsis
2qt	Liatris spicata Blazing Star
1gal	Monarda didyma Red Bergamot
2qt	Monarda fistulosa Purple Wild Bergamot
2qt	Penstemon digitalis Beardtongue
2qt	Symphotrichum laeve Smooth Aster
1gal	Schizachyrium scoparium Little Bluestem
1gal	Sorghastrum nutans Indian Grass

Pollinator Meadow
32 Yarrow
32 Butterfly Weed
16 all Purple Coneflower
32 starter Lespedeza capitata
32 plug Liatris spicata
64 sizes Lobelia spicata
8 Purple Wild Bergamot
16 Rudbeckia fulgida
96 Little Bluestem
32 Indian Grass

Note: All beds to be mulched with 3" of Shredded Bark Mulch. No dyes in mulch.

All trees to have a ring of mulch 3ft Dia. Do not mound mulch on tree trunk.

All Plants to be watered upon installation

All tags, ribbon and rope to be removed upon installation so as not to cause girdling and scarring of limbs or trunk.

Staking to be done on trees susceptible to blow over. Staking to remain for one season. Staking to be checked after one season. If still needed, adjust staking to accommodate new growth of tree.

Note: All perennial beds to be mulched with shredded bark mulch 2" thick. Water in plants upon installation completion.

Note: Mulch Meadow with 1" thick shredded bark Mulch. Water in Plants and mulch upon installation completion



PLANTING PLAN FOR
NORBROOK
 NEW HARTFORD, LLC

DESIGN BY
 EARTH TONES
 WOODBURY, CT
 EARTHTONESNATIVES.COM
 203.263.6626

LITCHFIELD TURNPIKE, RT 202
 NEW HARTFORD, CT
 APRIL 29, 2021 SCALE: 1" = 20'