

Daniel V. Jerram
First Selectman



Town Hall
530 Main Street
Post Office Box 316
New Hartford, CT

May 1, 2012

Connecticut Light & Power – Tree Trimming - Press Release

On Tuesday, April 4th, 2012, I had the opportunity to meet with officials from Connecticut Light & Power. They came to New Hartford to discuss their plans to improve electrical transmission services in the wake of outages caused by the storms in August and October 2011. These storms left many residents without power for over a week. After months of evaluation, CL&P has released their plan that includes significant tree work to be completed in New Hartford.



The CL&P plan calls for work to be completed on 55 miles of roads in New Hartford. Of the total, roughly 50 miles of road will receive standard tree “maintenance” and 5 miles of road will receive “enhanced” tree trimming (ETT) where some trees are more heavily pruned or ultimately removed. Please see the additional correspondence provided by CL&P about tree trimming. If you have any questions about the tree trimming program feel free to call me at Town Hall. FYI: the Town of New Hartford typically spends \$20,000 annually cutting and removing trees from town roads, but has spent nearly \$40,000 this year as a result of these storms.

Sincerely,


Daniel V. Jerram
First Selectman

Telephone: 860-379-3389 - Fax 860-379-0940 - Web: www.town.new-hartford.ct.us

An Equal Opportunity Provider and Employer



EXPANDED TREE WORK PROGRAM

Program Overview

Emergency preparedness and response is a top priority at Connecticut Light and Power (CL&P). An expanded tree-trimming program for 2012 is one way we're demonstrating that commitment.

In 2011, Connecticut residents experienced two historic storms within 60 days. Power outages caused by fallen trees and limbs paralyzed parts of the state for more than a week in August, and nearly two weeks in October. As a result, CL&P is proactively working to increase system reliability and reduce power outages caused by trees growing too close to power lines. While CL&P awaits regulatory approval for a proposed 10-year infrastructure hardening program, the company is beginning one element of that overall plan in 2012: Expanded Tree Work. When completed, the additional work is expected to reduce future power outages by 30-40 percent.

2012 Budget

\$53.5 million – an increase of \$27 million over 2011

Criteria for identifying work locations

- Electrical circuits with poor performance during the last three years
- Major segments with large number of customers
- Sections of circuits where enhanced tree trimming has not been performed in the past

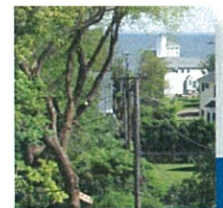
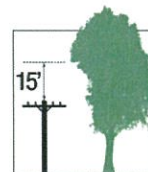
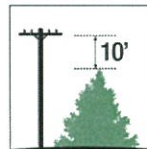
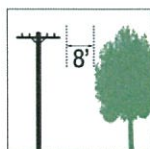
Work to be performed:

- 4,900 miles of tree work (an increase of 1,600 miles), including:
- 1,100 additional miles of routine tree trimming; and,
- 500 additional miles of enhanced tree trimming and tree removal

CL&P maintains 17,000 miles of poles and wires in Connecticut. In 2011, CL&P performed 2,950 miles of routine tree trimming and 195 miles of enhanced tree trimming and tree removal.

Routine tree trimming specifications

- 8-foot side clearance, 10-foot clearance below wires and 15-foot clearance over wires
- On certain main lines, limbs above the wires may be removed
- Property owners are notified by mail with 15 days to respond before work begins



work begins. We hope that the experience of last October's snow storm that caused trees to fail and knock power out to three-quarters of CL&P's customers will convince property owners that the Expanded Tree Work program is a prudent effort to prevent such damage in the future. CL&P will work diligently with property owners to answer their questions and address their concerns.

When will my street be trimmed?

Over the next five years, CL&P will trim 100 percent of its service territory. The 2012 schedule has not yet been finalized, but the plan is to begin ETW in March and complete work in all 2012 scheduled towns by the end of the year. Before we begin, you will receive a brochure and consent form explaining our timetable for trimming on your street. We will visit a second time to retrieve your signed consent form and answer any questions you may have. Throughout the process, you will have the name and phone number of the company arborist to address any concerns.

Who will do the tree work?

CL&P has engaged the services of experienced local and regional tree contractors who have met the safety and environmental standards we require for such work. Crews will be supervised by a CL&P arborist who will ensure the work is done properly.

Our neighborhood has many children. What safety precautions will the company take on my street?

Safety of the public and our crews is the top priority throughout the company. Thus, supervisory personnel will monitor the work of contractors, ensuring that all safety precautions are in place. In cases where there is a high volume of traffic, traffic control will be provided to help keep the public safe. The tree crews closely monitor their work site to ensure that no one enters their work zone.

How often will trees have to be trimmed?

It is expected the clearances should last from four to five years.

Will the branches and brush be left on my property?

The company will chip and haul away brush and small branches. Upon request, larger logs will be cut in smaller pieces and stacked on the property for use as firewood.

Can I replace any trees that are removed?

Yes, the company arborist can suggest select species of trees and shrubs that can be safely planted near electric lines and won't compromise the clearances we require. Care must be taken to ensure such plantings don't interfere with pedestrian traffic and necessary sight lines. CL&P plans to kick off a territory-wide public education program on this topic in the coming months.

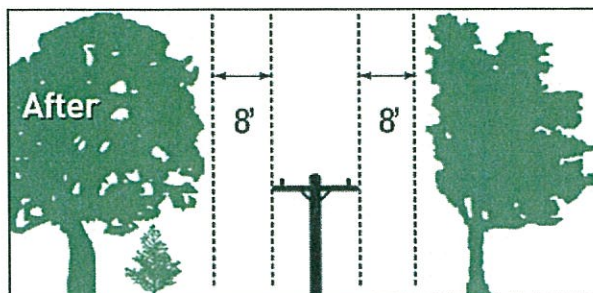
Who do I call if I have any concerns before the company arborist visits my street?

The CL&P Customer Service Center is prepared to answer your questions regarding CL&P's Vegetation Management program. You can reach the Customer Service Center by calling 800-286-2000, or visiting our website at www.cl-p.com.

Enhanced tree trimming specifications

8-foot clearance zone to either side of the utility poles and wires, from the ground up
This includes removal of:

- All overhanging limbs
- Tall brush and small trees within the clearance zone
- Dead or diseased trees with the potential to cause outages
- Consent forms and details about tree work will be delivered to each property owner in advance of any work performed
- Property owner consent is required in writing



Contractor agreements with CL&P

- CL&P will hire approximately 100 additional contractor tree crews to perform the expanded tree work
- Expanded tree work to begin in March and continue through December 2012
- Contractors will notify and work directly with property owners on behalf of CL&P
- Contractor vehicles will display CL&P signage
- CL&P will coordinate and oversee all contractors performing tree work
- Woody debris generated from the work will be removed
- Property owners may request wood chips or cut wood at no cost

Municipal and State Partnerships

- Expanded tree work will be performed in 120 towns and cities
- Outreach to town officials will take place before notifying private property owners
- Permits from local and state agencies will be obtained in advance
- CL&P will coordinate with municipal and state partners to share information in advance, and plan for parking and traffic control where necessary

Public Education

Outreach to CL&P customers will focus on:

- The shared responsibility of tree maintenance to ensure electric reliability
- Planting appropriate trees near utility poles and wires
- The importance of being prepared before storms